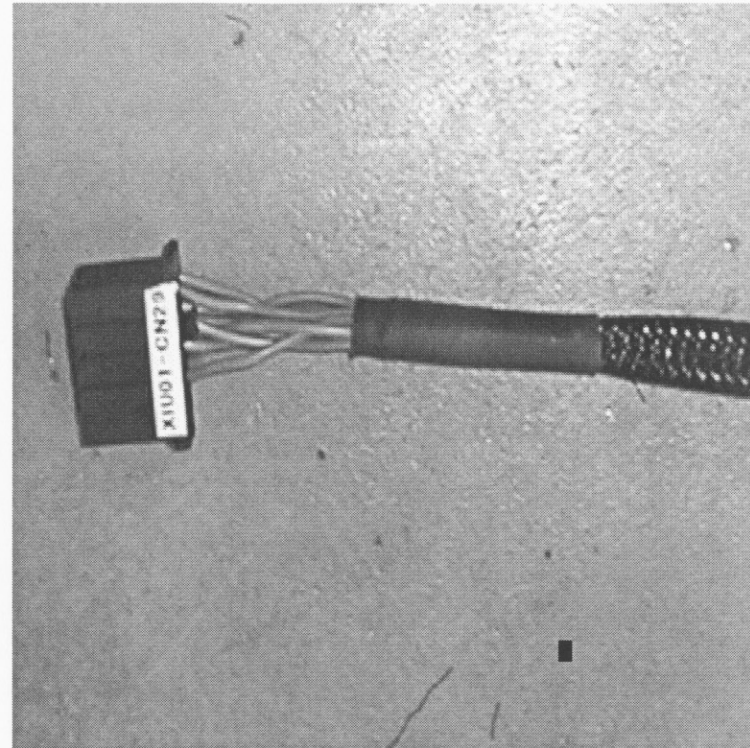
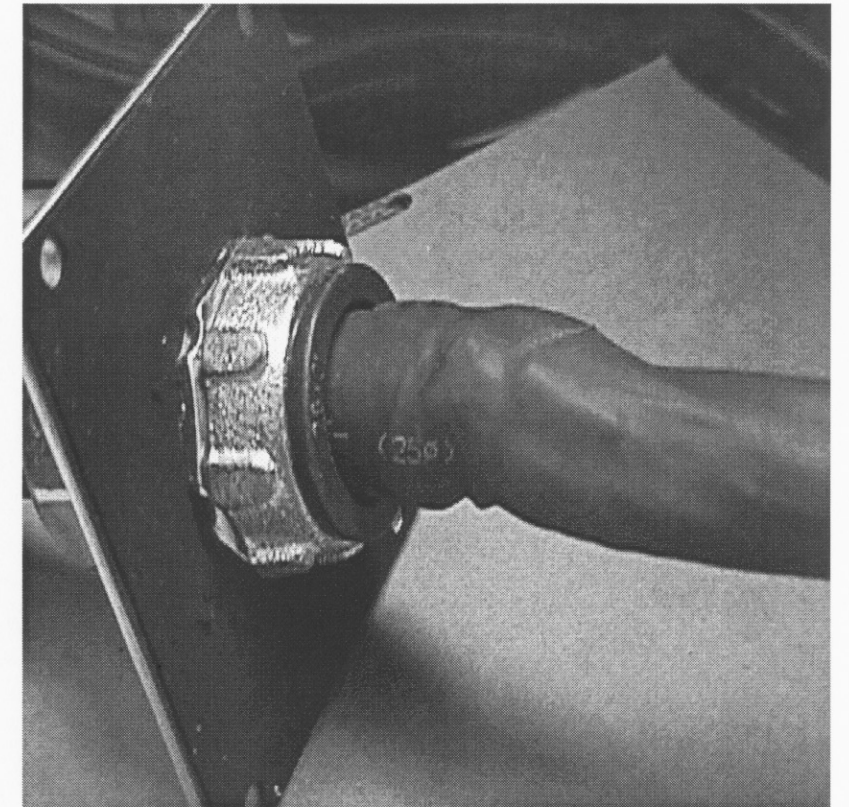


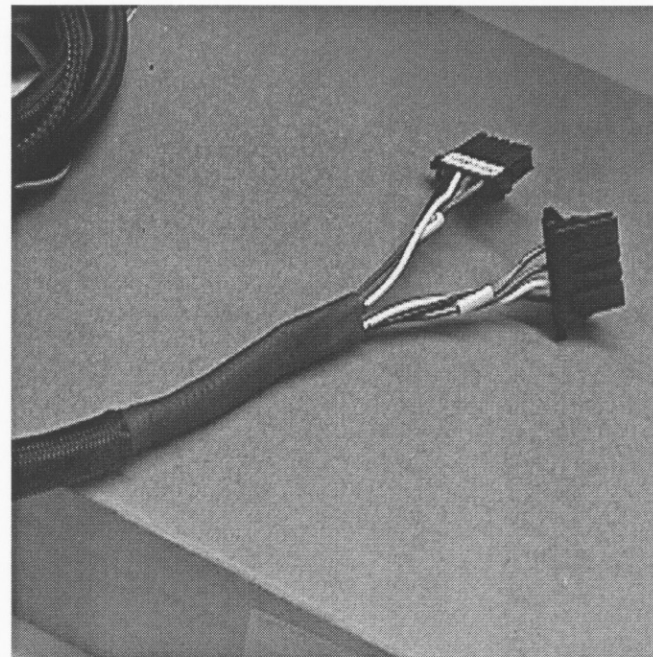
2BC power cable assembly view



CN 29 brake output connector view

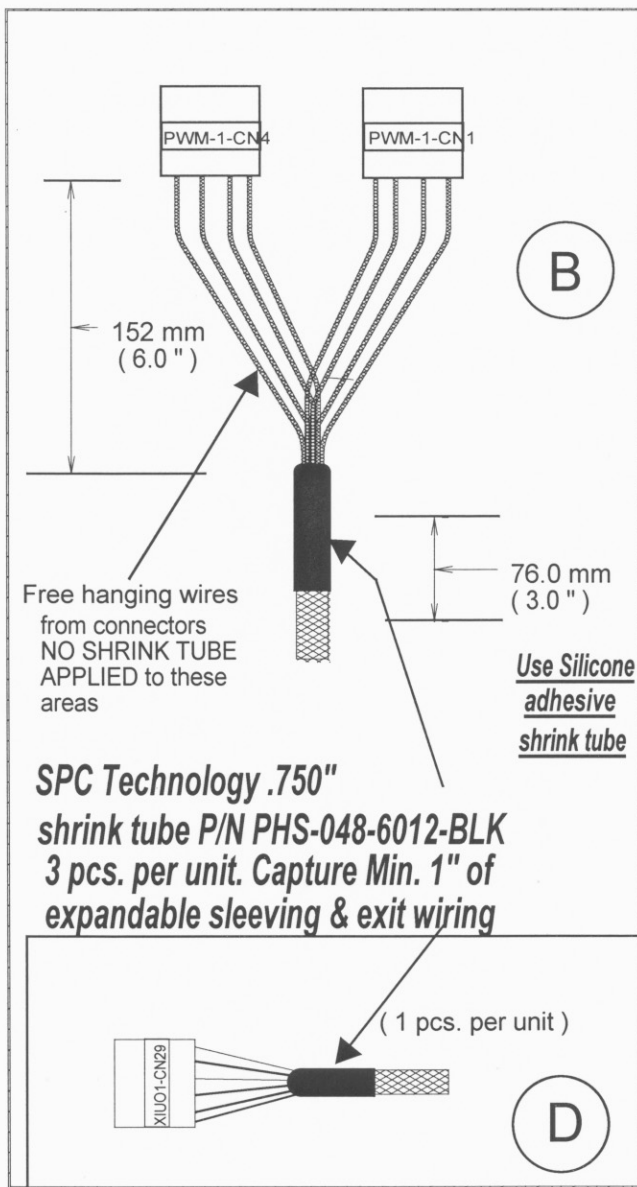


Gland nut / plate view with adhesive shrink tube .  
Adhesive shrink tube intrudes into gland nut opening , 0.500" deep.



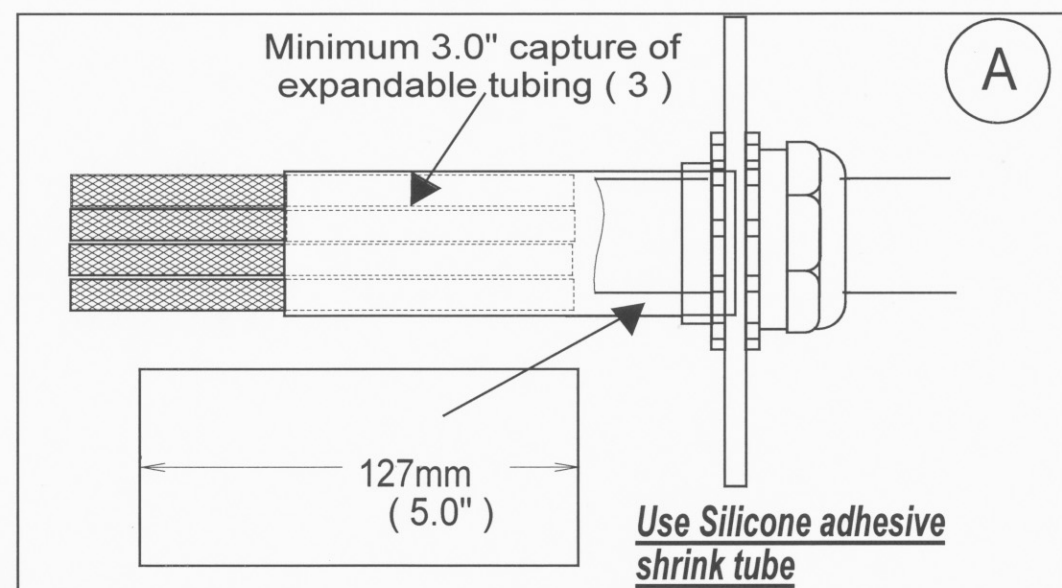
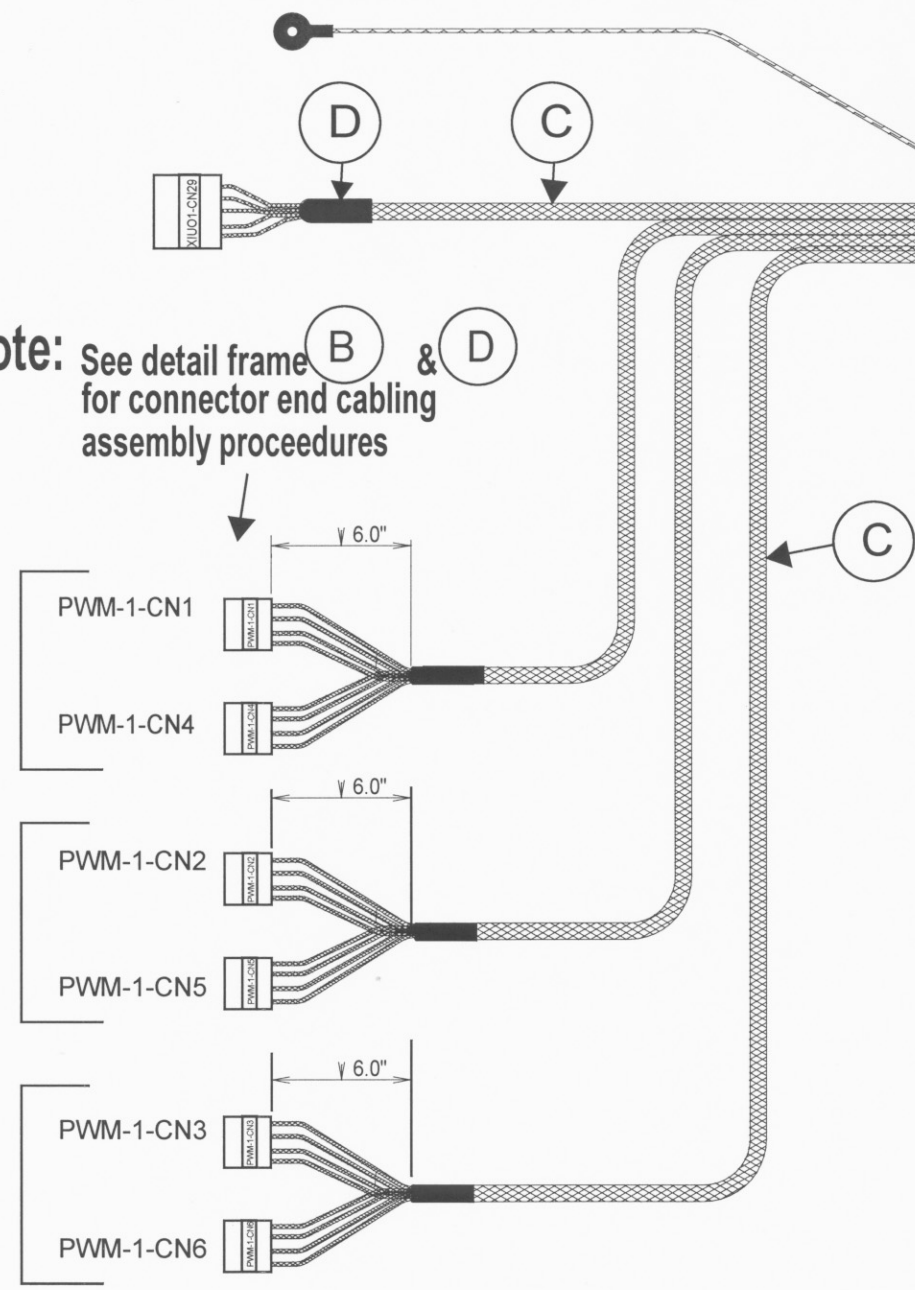
CN 1 and CN 4 output cable connections view  
Note cable pairing :  
CN1 & CN4  
CN2 & CN5  
CN3 & CN6

Adept / Yaskawa 2BC power cable pictorial assembly drawing for SVX 300 series 6 Axis				
SIZE B	FSCM NO.	DWG NO. 60660-00230	REV A	
SCALE N/S	CAD Autodesk	SHEET 1 OF 2		



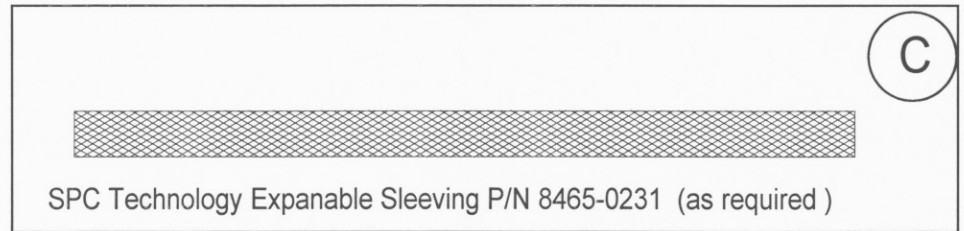
Green ground wire separate from expand tubing.

**Note:** See detail frame **B** & **D** for connector end cabling assembly procedures

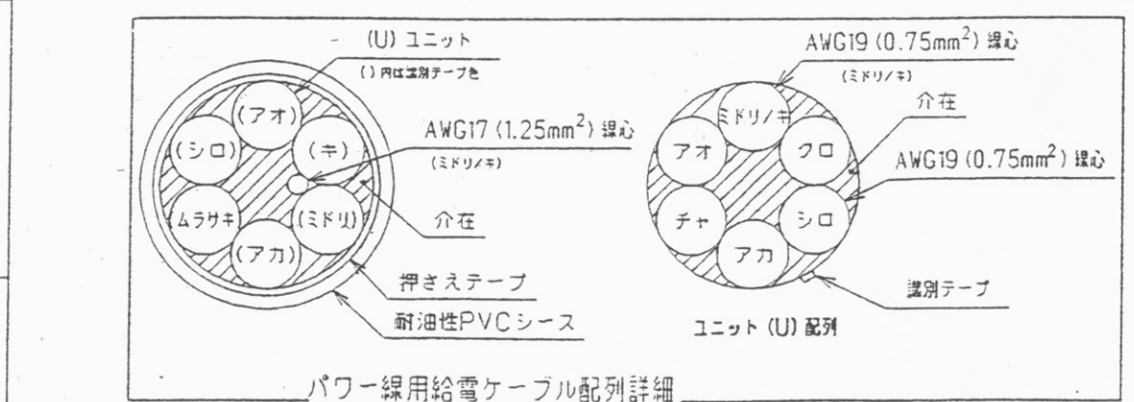
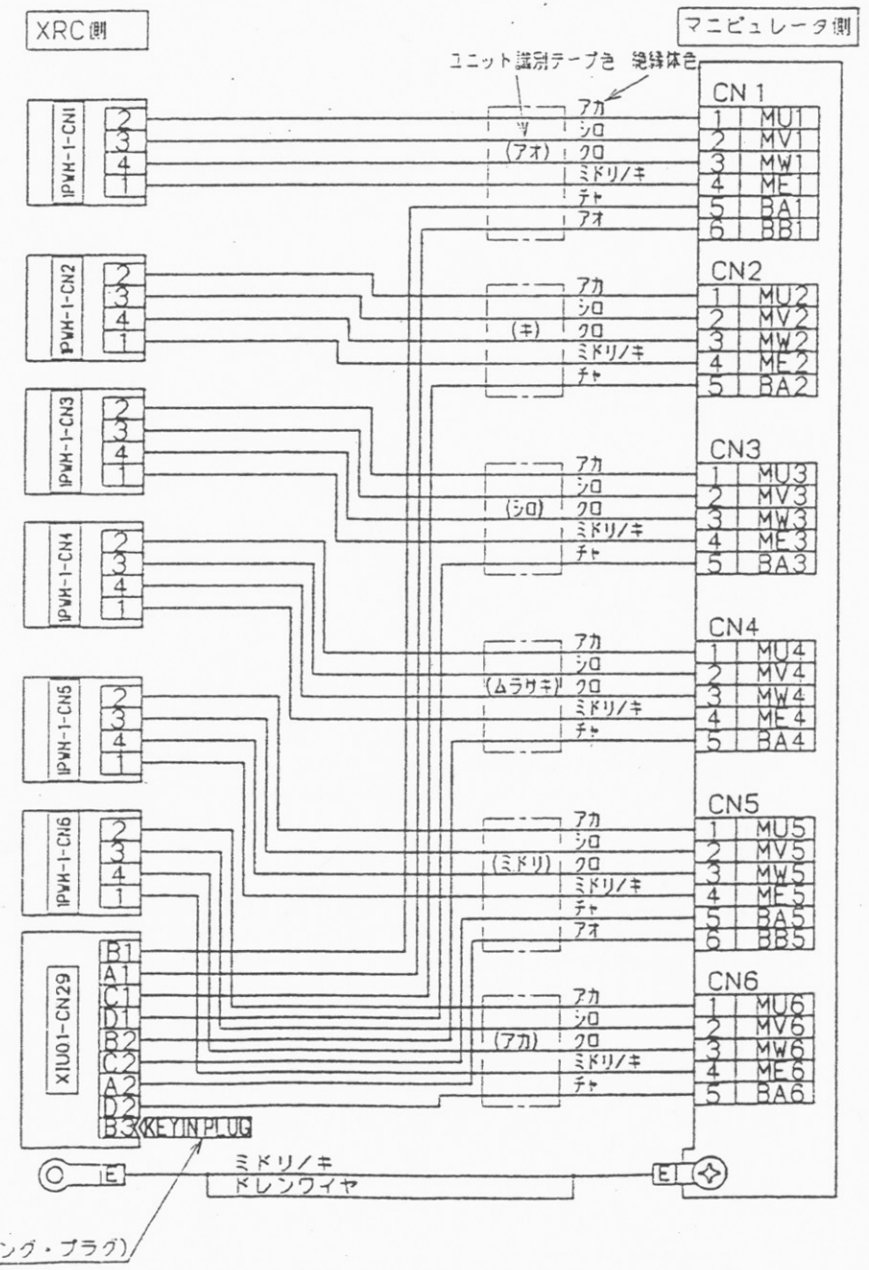
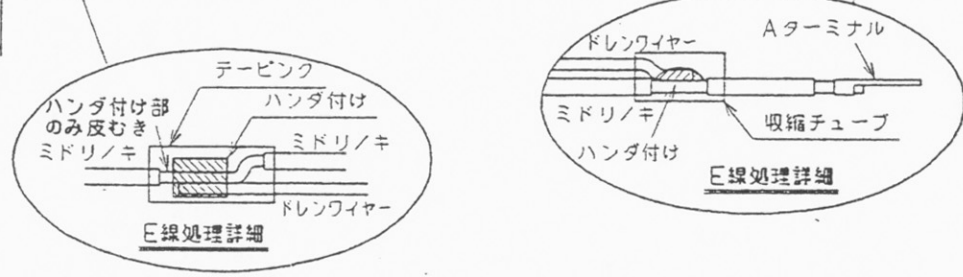
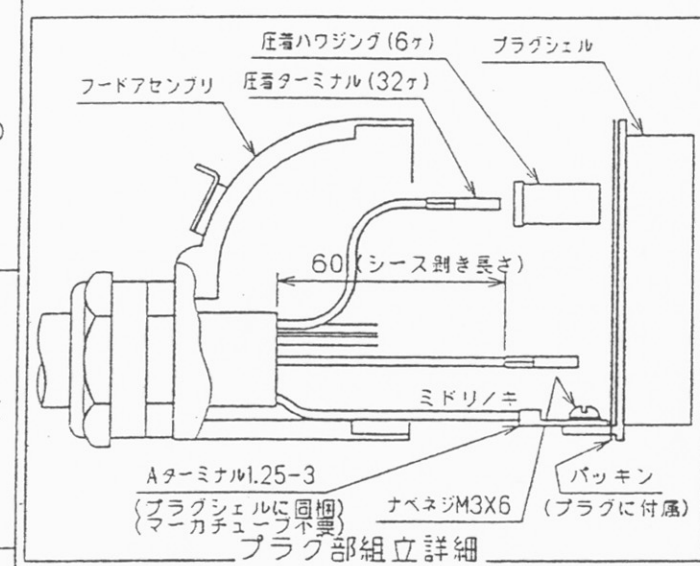
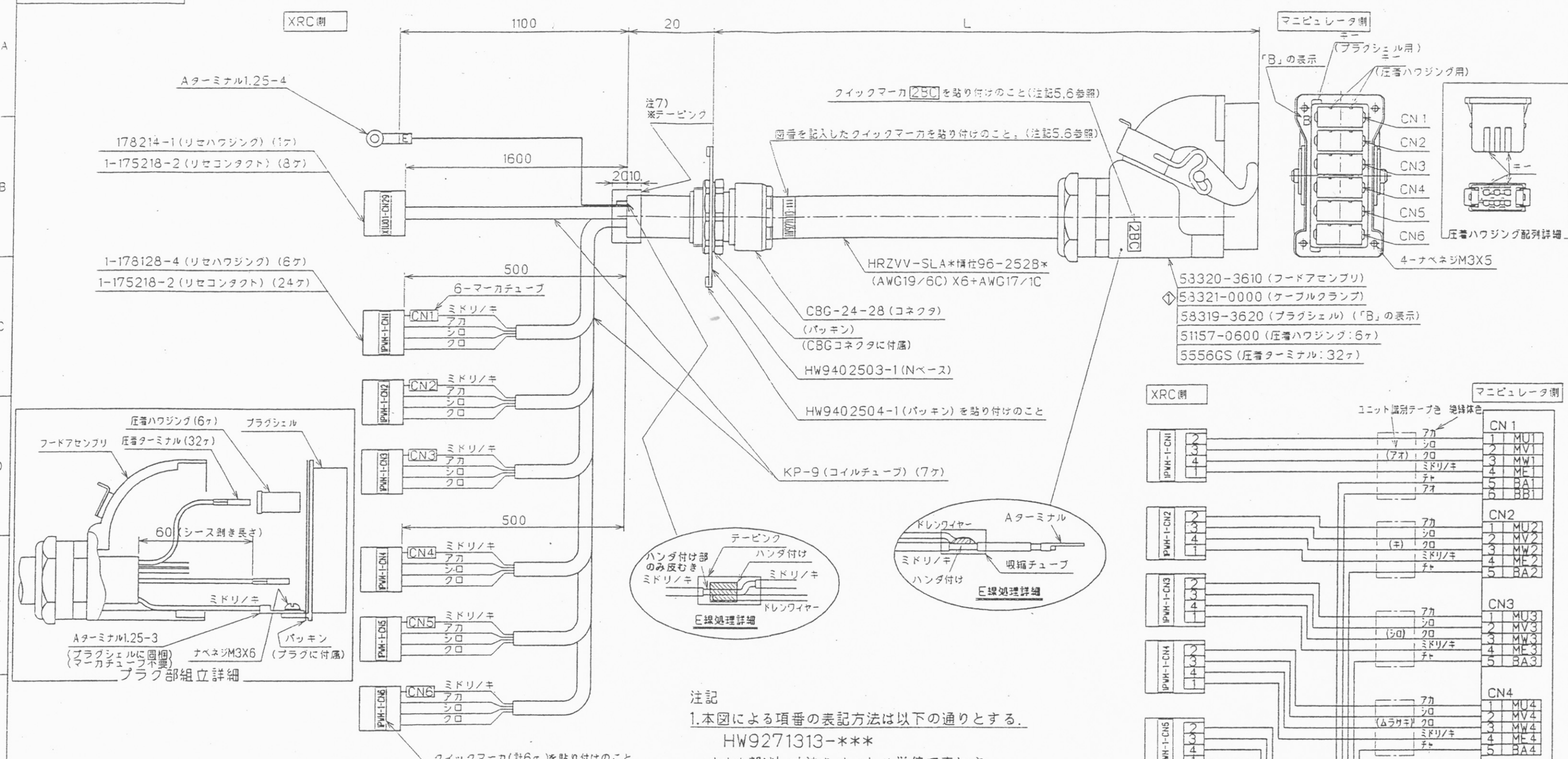


SPC Technology 1.5 " ( 38 mm ) P/N PHS-096-6605-BLK shrink tube  
 1 pcs. per unit. Capture expandable tube ends, min. 2.0" capture.  
 Shrink tube to enter into gland nut opening to a minimum depth of 19 mm / (0.75 " )

**Notes:** All shrink tubing / sleeving **MUST** be as specified, equal or better than specified.  
 To be used in conjunction with Yaskawa cable drawing HW9271313-(xx)  
 (xx) = cable length



<b>SV3 Six Axis Power cable Assembly</b>				
Yaskawa 2BC power cable sleeving modications				
SIZE <b>B</b>	FSCM NO.	DWG NO. <b>60660-00230</b>	REV <b>A</b>	
SCALE N/S	CAD Autodesk	SHEET 2 of 2		



- 注記
- 1.本図による項番の表記方法は以下の通りとする。  
HW9271313-\*\*\*  
\*\*\*部はL寸法をメートル単位で表わす。  
(例) L=5mの場合  
HW9271313-5
  - 2.本図によるL最大長さは30m以下とすること。
  - 3.本図は固定用及び可動用給電ケーブルである。
  - 4.線心の区別はユニット識別テープ色と絶縁体色で行うこと。
  - 5.クイックマーカは取付け時上部にくるよう図示の通り貼ること。
  - 6.図示クイックマーカの上に、透明ビニールテープを貼ること。
  - 7.使用しないリード線の処理は以下のように行なうこと。
    - ・ マニピュレータ側：プラグカバー内で切断のこと。
    - ・ XRC側：上図※部テーピング位置にて切断のこと。



adept technology, inc.

## MEMORANDUM

From: Dave Pap Rocki

Date: December 5, 2000

Subject: Yaskawa, Inc. as Sole Source Supplier

---

This memo is prepared to document agreement upon the statement:

**Yaskawa, Inc. is considered a Sole Source Supplier for Vector 6-axis manipulators and related spare parts.**

Hence, this memo provides Sole Source Authorization for all Source Control Drawings (SCD's) for Adept 6-axis Vector manipulators and related spare parts.

Maurice Green 12/5/00  
Director of Materials Date

Dan Whalen 12-5-2000  
Component Engineering Date

Carl 12-5-2000  
Product Marketing Date

B. Shi 12-5-00  
Vice President, Engineering Date

Maurice 12-5-00  
Vice President, Operations Date